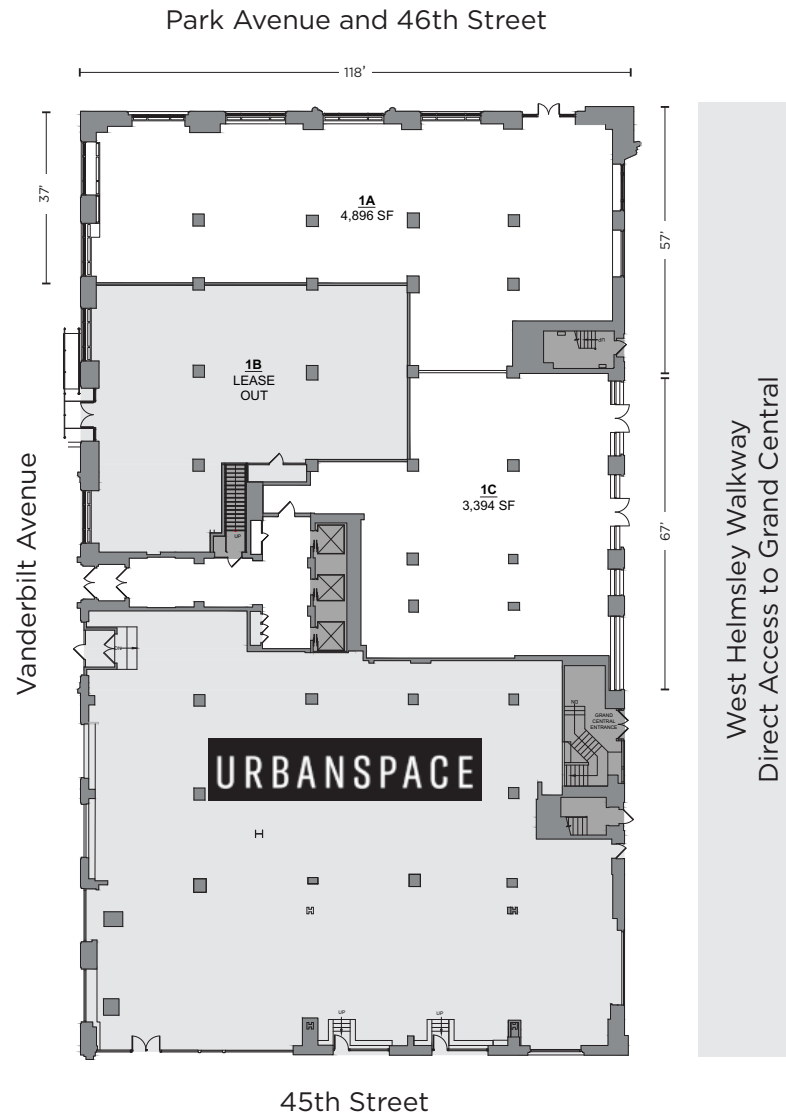


GROUND FLOOR



1A : 4,896 SF

Frontage

- 37' Vanderbilt Ave
 - 118' Park Avenue & 46th St
 - 57' West Helmsley Walkway
-

1C : 3,394 SF

Frontage

- 67' West Helmsley Walkway
-

• 21' slab height

- New storefront with oversized windows
 - Upgraded pedestrian walkway with digital advertising available
-